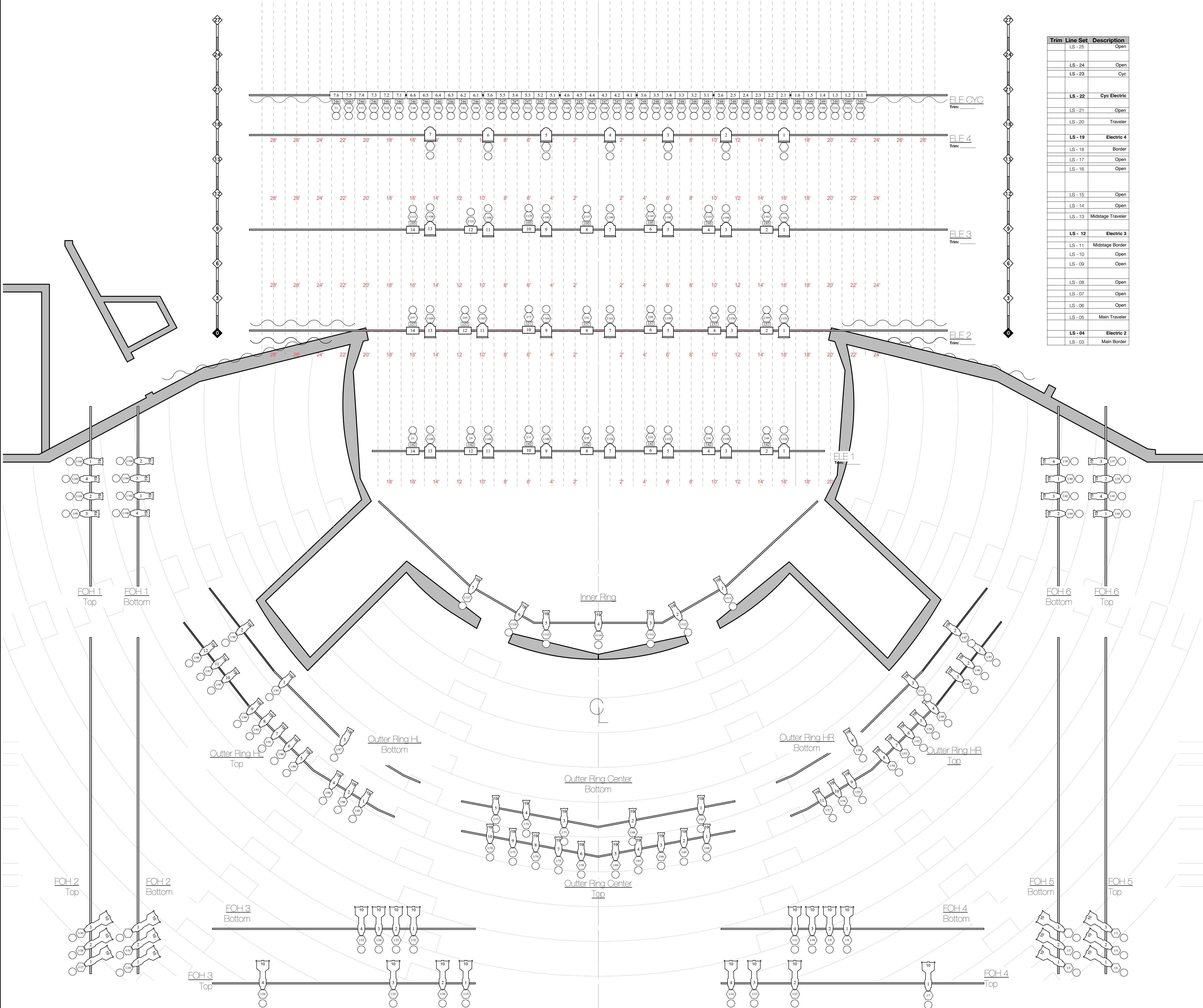


A Light Plot
Scale: 1/4"=1'-00"

VECTORWORKS EDUCATIONAL VERSION



Trim	Line Set	Description
	LS - 25	Open
	LS - 24	Open
	LS - 23	Cyc
	LS - 22	Cyc Electric
	LS - 21	Open
	LS - 20	Traveler
	LS - 19	Electric 4
	LS - 18	Border
	LS - 17	Open
	LS - 16	Open
	LS - 15	Open
	LS - 14	Open
	LS - 13	Midstage Traveler
	LS - 12	Electric 3
	LS - 11	Midstage Border
	LS - 10	Open
	LS - 09	Open
	LS - 08	Open
	LS - 07	Open
	LS - 06	Open
	LS - 05	Main Traveler
	LS - 04	Electric 2
	LS - 03	Main Border

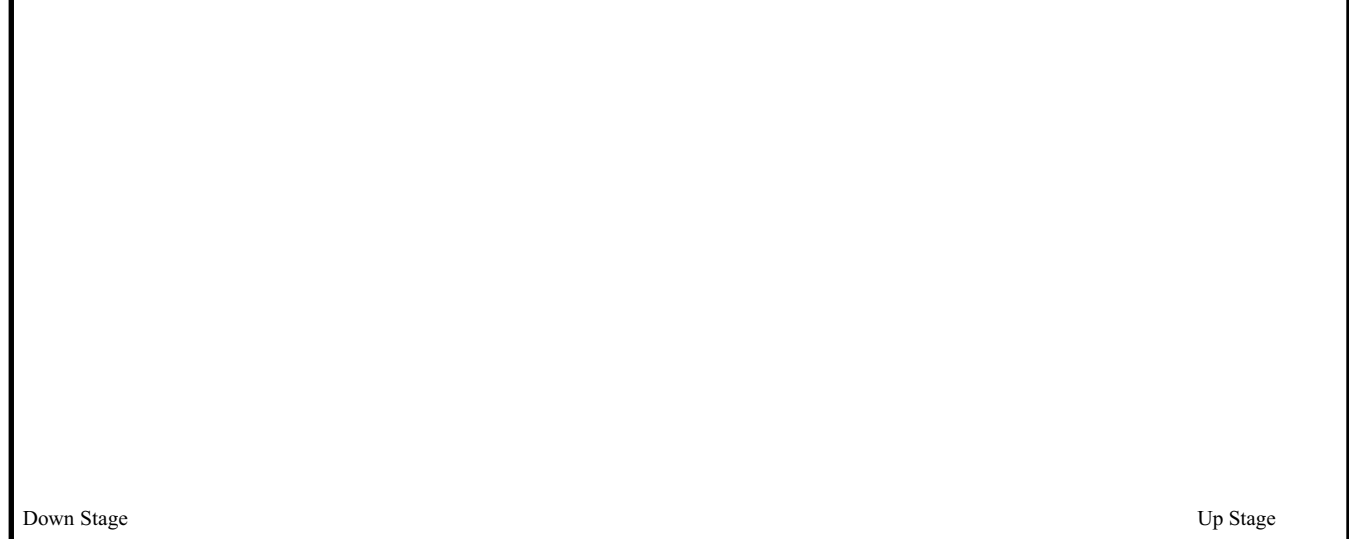
B Scale: 1/4"=1'-00"



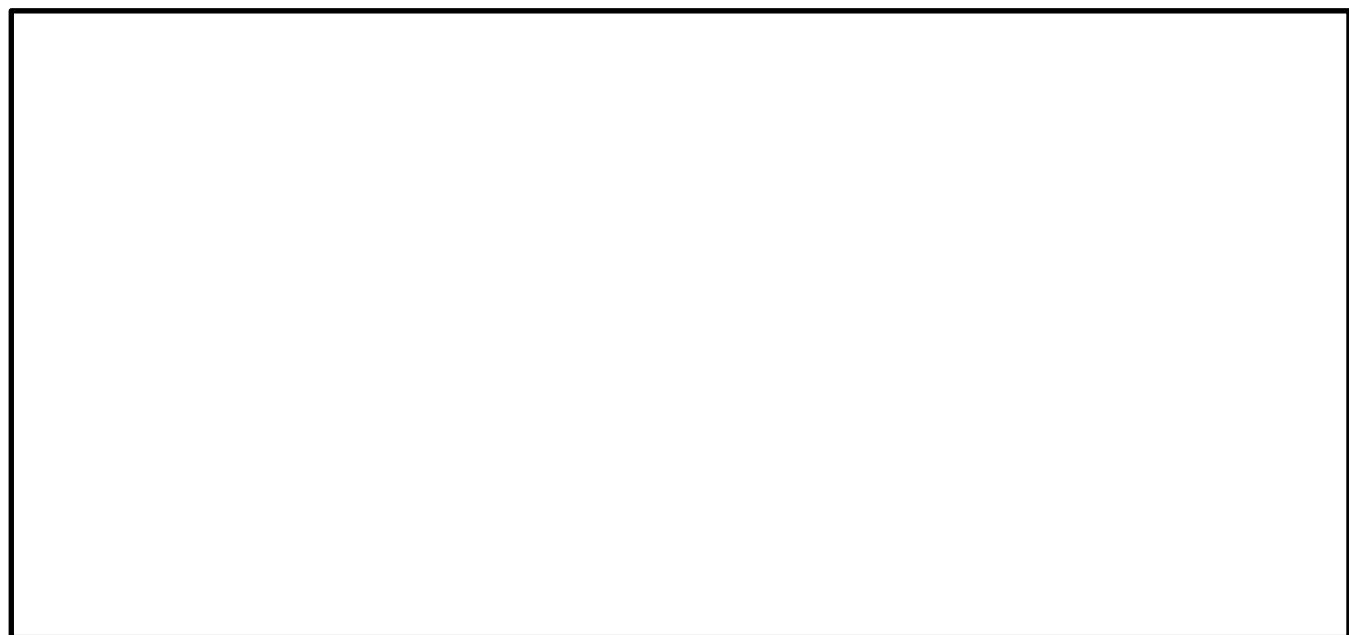
C Scale: 1/4"=1'-00"



D Scale: 1/4"=1'-00"



E Scale: 1/4"=1'-00"



University Theatre
Rep Light Plot
Light Plot
Design by: Venue Stewart Theatre
Scale: 1/4" = 1'-00"
Print date: 1/1/2010
File Name: 01 Stewart Rep
Plate 1 of 1
Rev: 1

Notes:
- All color, templates, & accessories to be dropped in at Load in
- House to provide blue light backstage prior to first tech.
- House to provide two additional crew positions in back table
- House to provide tech table lights
- LED fixtures to be patched as Moving Light

Legend:
Color
Degree
Unit Number
Circuit Num
Address/Dim
Channel

Lighting Key:
- House to provide blue light backstage prior to first tech.
- House to provide two additional crew positions in back table
- House to provide tech table lights
- LED fixtures to be patched as Moving Light

VECTORWORKS EDUCATIONAL VERSION